



Bangkok Patana School
The British International School in Thailand
Established 1957

Mr Chris Sammons, **Head of School**
Mr Matthew Seddon, **Secondary Principal**
Mr Andrew Roff, **IB Coordinator**
Head of Careers and Universities
Mr Andrew Haughton, anha@patana.ac.th
Careers and University Counsellors
Mr Karel De Cock, kade@patana.ac.th
Ms Danielle Sheppard, dash@patana.ac.th
Mr Kim Ekstrom, joek@patana.ac.th
Ms Stephanie De Guzman, stde@patana.ac.th
Dr Jessica Vechbanyongratana, jeve@patana.ac.th

BANGKOK PATANA SCHOOL

PROFILE 2025/26

EXAM CODES: CEEB 695190 AND IBO 000765

IGCSE: CIE TH100 AND EDEXCEL 98001

An IB World School accredited by CIS

Community Overview

- Non-selective and not-for-profit
- 2,300+ students from Nursery to Year 13
- 1,126 Secondary students
- 68 different nationalities:
 - 20% Thai
 - 14% British
 - 11% North American
 - 7% Indian
 - 7% Chinese
 - 5% Australian
 - 36% Rest of the World
- Graduating Class of 2026: 144 students

The Educational Programme

- English is the language of instruction for our classes
- We offer Cambridge and EDEXCEL (I)GCSE in Years 10 and 11
- We offer the International Baccalaureate Diploma, Career-related and Courses programmes in Years 12 and 13.
- 95% of our students take the full IB Diploma programme.
- Grade designations follow the British school system:
 - Year 10 = Grade 9; Year 11 = Grade 10;
 - Year 12 = Grade 11; Year 13 = Grade 12

Reporting System

- There is no weighting of grades or calculation of Grade Point Average
- It is the policy of the school to not rank students or calculate GPA.
- Transcript projected grades reflect the student's likely final grade in the (I)GCSE, GCE A(S) and IB examinations. This grade is based on the teacher's professional judgement and the student's approach to learning and is drawn from a range of evidence, including the quality of class and home learning, key assessment data, attendance and, where appropriate, exam results.
- In cases where universities require or request, Bangkok Patana School reports all changes to a student's enrolment status as a result of a serious disciplinary incident.

Policies and Procedures of Note:

- Bangkok Patana School students sign and submit an application integrity agreement before university applications are processed. This agreement ensures understanding of the Guide to Ethical Practice in College Admission outlined by the National Association of College Admission Counselling (NACAC).
- Bangkok Patana School students are limited to 12 well-considered applications to university. UC's and UCAS each count as one university application.
- Bangkok Patana School policy allows for a maximum of one counsellor recommendation and two teacher recommendations unless otherwise required by a university.



Our mission is to ensure that students of different nationalities grow to their full potential as independent learners in a caring British international community.

(I)GCSE Curriculum and Results 2025

The (International) General Certificate of Secondary Education are examinations which originate and are the standard qualification in England and Wales for students aged 14 to 16. All students take cumulative examinations in the following required core subjects:

English (Language and Literature)

Mathematics (Algebra, Calculus, Trigonometry, Statistics, Vector Geometry)

Coordinated Sciences (Single, Double Award or Triple Science)

World Languages (French, German, Japanese, Mandarin, Spanish or Thai)

In addition, students choose three from a list of optional subjects: Art, Business Studies, Computer Studies, Drama, Design + Technology, Economics, Geography, History, ICT, Music and Physical Education.

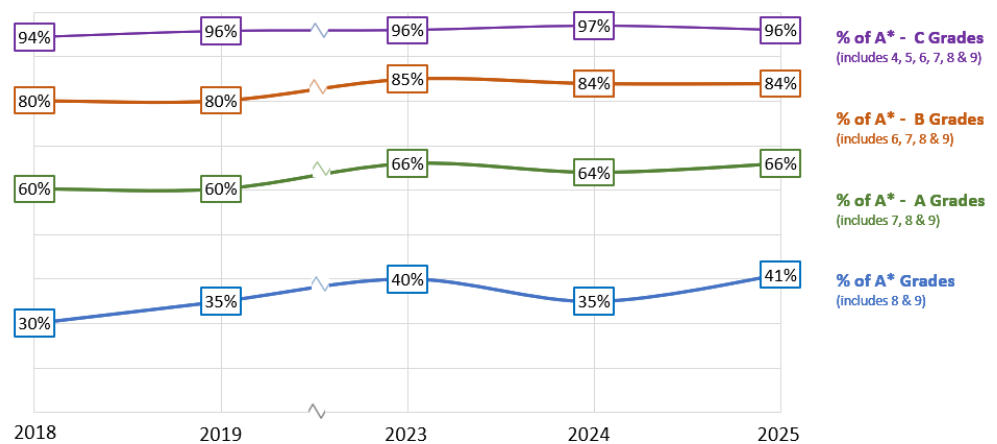
Grades are awarded on a nine-point scale, through one of two different examination boards. Cambridge grade from A* - G and Edexcel use a 9-1 scale, with 8 and 9 being considered equivalent to A*.

(I)GCSE RESULTS 2025

66% three-quarters of the grades were A - A* (7-9)

84% of students achieved grades A* - B (6-9)

5 students received 9 or more A*(9)



Extra-curricular Programme

Bangkok Patana has a vast extra-curricular programme which aims to enrich and extend students' academic lives.

- Over 200 activities available to students at recreational and internationally recognised levels.
- Opportunities include sports, visual arts, drama, music, community service, technology, language learning and student government.
- Programmes such as the Model United Nations, Duke of Edinburgh's International Award, the Junior Achievement programme and Community Service Activities are popular amongst students.
- Students are encouraged to pursue work experience placements fully supported by the school.



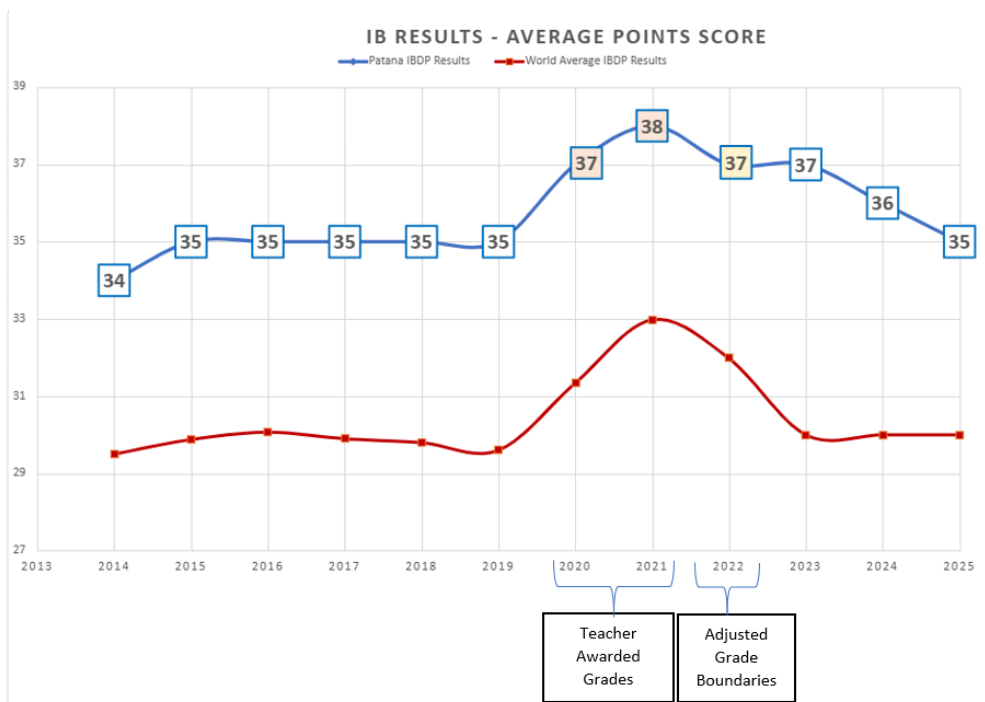
International Baccalaureate Curriculum and Results 2025

International Baccalaureate Diploma Programme (IBDP)

- A two-year course where students take six subjects: three at Higher Level (240 class hours per subject) and three at Standard Level (150 class hours per subject)
- Students choose one subject from each of six academic groups: Literature, Language Acquisition, Individuals and Societies, Sciences, Mathematics, Arts (or a second subject from Social Sciences or Science).
- Each course is awarded a grade between 1 and a maximum of 7 points

Additional components offer the possibility of three bonus points:

- Theory of Knowledge (ToK) – a course which critically evaluates knowledge and culminates in an internal presentation and externally marked essay
- Extended Essay (EE) – a 4,000 word piece of original, independent research supervised by a faculty member
- Evidence of commitment to Creativity, Activity and Service (CAS)



21% STUDENTS RECEIVED 40+ POINTS

35 AVERAGE SCORE OF GRAD '25 (128 STUDENTS)

Pass Rate

99% Bangkok Patana School

80% Global

IBCP is a two-year programme of study where students complete career-related study through the International BTEC Level 3 Diploma, two IB Diploma Courses at either Higher Level or Standard Level, and a language. The BTEC Level 3 Diploma is a 720-hour taught course that culminates in a double award. The BTEC is graded from Distinction (D*) to Pass (P).

IB Course Programme

Students are required to complete all exam requirements in four to six IB courses, an appropriate level of EE and the full CAS requirement.

Students also graduate with a CIS accredited high school diploma and nearly all go onto university education.

2025 IB Distribution (Number of Students)								
Score	7	6	5	4	3	2	1	Total
Group 1: A Language	6	68	73	11	1	0	0	159
Group 2: B Language	9	36	31	22	2	0	0	100
Group 3: Social Science	54	92	48	14	5	1	0	214
Group 4: Science	35	48	36	17	7	0	0	143
Group 5: Mathematics	20	32	41	27	8	1	1	130
Group 6: Arts	8	9	10	4	2	0	0	33

University Acceptances 2024 and 2025

Universities where students have matriculated are shown in bold, offers shown in parenthesis

Ninety-nine per cent of students from Bangkok Patana pursue undergraduate degrees at institutions around the world. Our 2025 graduates recently matriculated to the following general breakdown: United States of America: 28%, United Kingdom: 24%, Australia: 12% Asia: 12% Europe: 11% Canada: 2%

United Kingdom

Abertay University
Aston University
Bath Spa University
BIMM University
Bournemouth University (1)
Brunel University (1)
Cardiff University
City University of London (1)
Coventry University
Durham University
ESCP Business School, London (1)
Goldsmiths, University of London
Imperial College London (4)
King's College London (4)
Kingston University
Lancaster University (2)
Leeds Arts University
Leeds Beckett University (1)
Leeds Conservatoire
Liverpool Hope University
Liverpool Institute for Performing Arts
Liverpool John Moores University
London School of Economics and Political Science (4)
Loughborough University
Manchester Metropolitan University
Manchester School of Architecture
Newcastle University
Norwich University of the Arts (1)
Nottingham Trent University
Oxford Brookes University
Queen Mary University of London
Queen's University Belfast (1)
Royal Holloway, University of London
Royal Veterinary College, UK (1)
School of Oriental and African Studies,
University of London
Sheffield Hallam University
Staffordshire University
Swansea University
Teesside University
The University of Liverpool
University College Birmingham
University College London (3)
University of Aberdeen
University of the Arts London (1)
University of Bath (4)
University of Birmingham
University of Brighton
University of Bristol (2)
University of Cambridge (1)
University of Chester
University of Derby
University of Dundee
University of Edinburgh (4)
University of Essex
University of Exeter (4)
University of Glasgow (1)
University of Gloucestershire
University of Greenwich
University of Kent, Canterbury
University of Leeds (3)
University of Leicester
University of Lincoln
University of Liverpool (1)
University of Manchester (2)
University of Nottingham (3)
University of Oxford (1)
University of Reading (3)
University of Salford
University of Sheffield (1)
University of Southampton (1)
University of St Andrews (1)
University of Stirling
University of Strathclyde
University of Surrey
University of Sussex (1)
University of the Arts London
University of Warwick (2)
University of the West of England (1)
University of Westminster

University of Worcester
University of York

United States of America

Babson College (4)
Baylor University (1)
Bentley University
Boston College
Boston University (8)
Bowdoin College (1)
Brown University (1)
California College of the Arts
California Polytechnic State University, San Luis Obispo (1)
California State University, Fresno
California State University, Sacramento
Carnegie Mellon University (1)
Case Western Reserve University
Chaminade University of Honolulu
Claremont McKenna College (1)
Clark University (1)
Cooper Union (1)
Colgate University
College of William & Mary
Cornell University (2)
Drew University
Drexel University
Emerson College
Emory University
Fordham University (1)
Franklin & Marshall College (1)
George Washington University
Georgia Institute of Technology (2)
Harvey Mudd College (1)
Haverford College (1)
Hult International Business School,
Boston
Illinois Institute of Technology
Indiana University Bloomington
Lehigh University
Long Island University, Post
Loyola Marymount University
Maryland Institute College of Art
Michigan State University (1)
Middlebury College (2)
New York University (5)
North Carolina State University
Northeastern University (4)
Northwestern University (5)
Oregon State University
Otis College of Art and Design (1)
Pace University
Pennsylvania State University (2)
Pepperdine University
Pomona College (2)
Portland State University
Pratt Institute (3)
Purdue University (4)
Rice University (1)
Ringling College of Art and Design (1)
Rochester Institute of Technology
Rose-Hulman Institute of Technology
Rutgers University - New Brunswick
Sacred Heart University (1)
San Jose State University (1)
Santa Clara University
Savannah College of Art and Design
School of the Art Institute of Chicago
Seattle University
Skidmore College
Smith College
Stanford University (1)
Stony Brook University
SUNY College of Environmental Science and Forestry
Syracuse University
Temple University
The New School (1)
The Ohio State University
The University of Texas at Austin (1)
The University of Texas at Dallas
Tufts University (1)
University of California, Berkeley
University of California, Davis (1)
University of California, Irvine (1)
University of California, Los Angeles (3)
University of California, Merced
University of California, Riverside
University of California, San Diego (3)
University of California, Santa Barbara
University of California, Santa Cruz
University of Colorado Boulder (1)
University of Connecticut
University of Delaware
University of Houston
University of Illinois at Urbana Champaign (1)
University of Maryland
University of Massachusetts, Amherst (1)
University of Michigan Ann Arbor
University of Minnesota Twin Cities
University of New Hampshire
University of North Carolina at Chapel Hill
University of North Dakota
University of Oregon
University of Pennsylvania (4)
University of Pittsburgh
University of Rochester
University of San Diego
University of San Francisco
University of Southern California (2)
University of Virginia (1)
University of Washington (2)
University of Wisconsin, Madison (4)
Utah State University (2)
Vanderbilt University
Virginia Polytechnic Institute and State University (1)
Wake Forest University
Washington State University, Pullman
Washington University in St. Louis
Wentworth Institute of Technology
Wesleyan University
Willamette University
Worcester Polytechnic Institute

Europe

Bocconi University, Italy (1)
Business Academy Southwest in Denmark (1)
BI Norwegian Business School (1)
Constructor University (Jacobs University) (1)
Ecole Polytechnique
Eindhoven University of Technology (1)
EDHEC Business School, France (2)
Erasmus University College (2)
ESCP Paris (1)
Glion Institute of Higher Education
Hanze University of Applied Sciences, Groningen
IE University (6)
Institut International de l'Image et du Son, France (1)
Instituto Marangoni (1)
KU Leuven (2)
Leiden University
Maastricht University (2)
Solvay Brussels School - Economics & Management (1)
University of Nicosia
Sciences Po, Dijon (1)
Thim University of Applied Sciences, Netherlands (1)
Tilburg University (1)
Trinity College Dublin (1)
University College Cork (1)
University College Dublin
University College Roosevelt (1)
University of Amsterdam (2)
University of Groningen

Utrecht University
Vrije Universiteit, Amsterdam
Universidad Carlos III de Madrid
Universidad de Alcalá, Spain (1)
University of Navarra (1)
University of Geneva

Canada

Brock University
Concordia University (1)
Dalhousie University
McGill University (1)
McMaster University (2)
OCAD University
Ontario Tech University
Queen's University
Simon Fraser University
The University of British Columbia, Okanagan
The University of British Columbia, Vancouver (7)
Toronto Metropolitan University
Trent University
University of Alberta
University of Calgary (1)
University of Guelph (1)
University of Ottawa
University of Toronto Mississauga
University of Toronto Scarborough
University of Toronto (3)
University of Victoria
University of Waterloo
Western University (2)
Wilfrid Laurier University
York University (1)

Asia

Asian Institute of Hospitality Management (1)
Assumption University
Chulalongkorn University (2)
Hong Kong Metropolitan University (1)
Hong Kong University of Science and Technology
HRH Princess Chulabhorn College of Medical Science
ISME School of Management and Entrepreneurship, Atlas SkillTech University (1)
Korea Advanced Institute of Science & Technology (1)
Keio University, Mita Campus
Kyoto University of Advanced Science
Mahidol University (1)
Nanyang Technological University (1)
National Taiwan University
National University of Singapore (1)
New York University Shanghai
Raffles International College Bangkok (1)
Rangsit University, Thailand (1)
Rikkyo University
Sogang University (1)
Sophia University
Srinakharinwirot University (2)
Thammasat University (1)
The Chinese University of Hong Kong
The University of Hong Kong (1)
University of Tsukuba (1)
International Christian University (1)
Whistling Woods International, India (1)

Australia

Bond University (1)
Griffith University
Monash University (5)
The University of Sydney (2)
University of Melbourne (15)
University of New South Wales (1)
University of Queensland (1)
University of Technology Sydney (1)